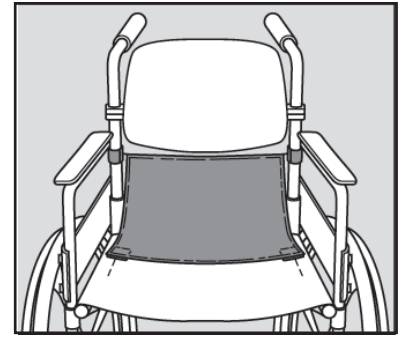




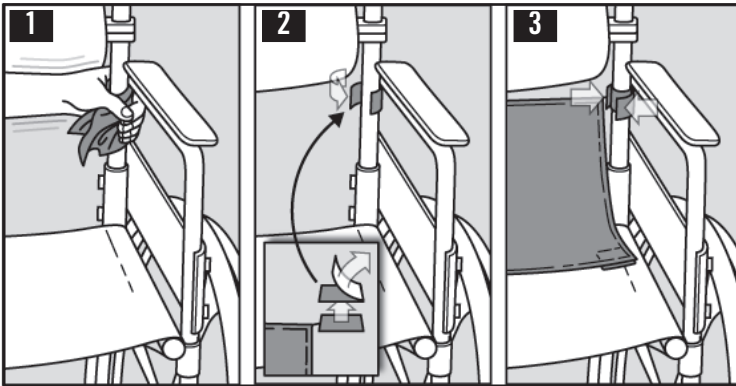
ROHO® Privacy Shield

The ROHO® Privacy Shield is a non-medical accessory intended to be used by individuals who want to shield the rear sitting area of their wheelchairs. It is designed to attach directly to most wheelchairs.

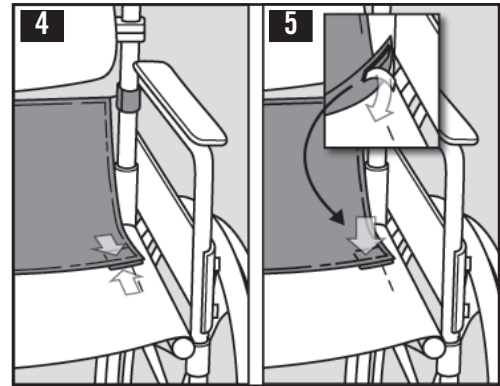


Attachment Instructions:

CAUTION: Make sure the fastener strip attachment location on the back canes does not interfere with back cane adjustment.



Repeat steps 1-3 for the other side.



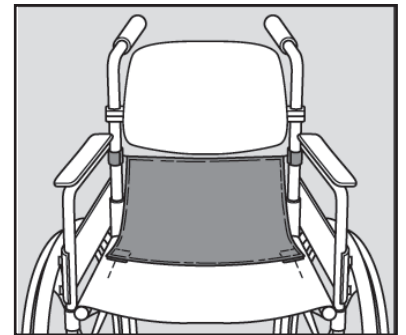
Repeat steps 4-5 for the other side.

WARNING: To avoid irritation to the user, make sure the hook fastener strips attached to the wheelchair seat are aligned and secured to the loop fastener strips on the Privacy Shield.



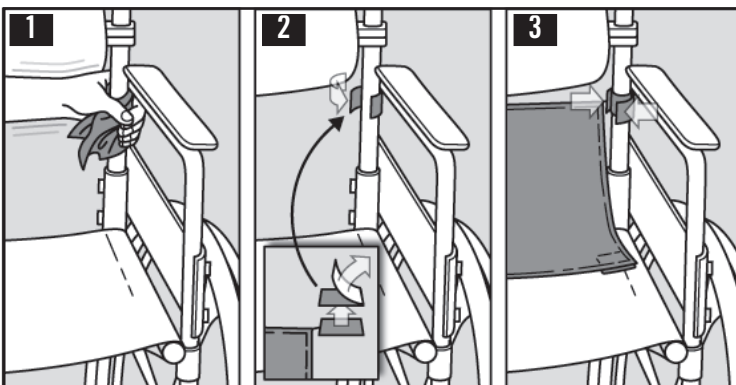
ROHO® Privacy Shield

The ROHO® Privacy Shield is a non-medical accessory intended to be used by individuals who want to shield the rear sitting area of their wheelchairs. It is designed to attach directly to most wheelchairs.

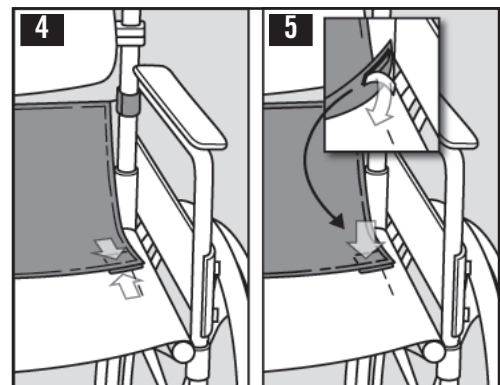


Attachment Instructions:

CAUTION: Make sure the fastener strip attachment location on the back canes does not interfere with back cane adjustment.



Repeat steps 1-3 for the other side.



Repeat steps 4-5 for the other side.

WARNING: To avoid irritation to the user, make sure the hook fastener strips attached to the wheelchair seat are aligned and secured to the loop fastener strips on the Privacy Shield.

Return Policy:

Product must be new and unused, and prior authorization is required; contact ROHO, Inc. May be subject to a restocking charge.

Contact Information:

In the U.S.A.: ROHO Warranty Service and Customer Care

Phone: 800-851-3449

Fax: 888-551-3449

Warranty Service: warranty@roho.com

Customer Care: cc@roho.com

Note: If directed to return any items, please send to:
ROHO, Inc., 1501 South 74th Street, Belleville, IL 62223

Outside the U.S.A.: ROHO International

Phone: 618-277-9150

Fax: 618-277-6518

intl@roho.com

Or visit ROHO.com for a list of ROHO International distributors.

Limited Warranty:

What is covered? Defects in materials or workmanship of the product.

For how long? 6 months from the date the product was originally purchased.

What is not covered? A product that has been misused, damaged by an accident, or damaged from “an act of Nature”, e.g., flood, tornado, earthquake, fire. Any substitutions of supplied product accessories or modification to the product will void the warranty.

What the customer must do: Contact the ROHO, Inc. Items sent without prior authorization will not be returned to the customer.

Disclaimer and Limitation of Warranties: Any implied warranties, including the MERCHANTABILITY AND FITNESS FOR A PARTICULAR PURPOSE, are limited to the time period defined in the instructions provided with the product, and any action for a breach of such warranties or any express warranties herein must be commenced within that time. ROHO, Inc. shall not be responsible for any incidental or consequential damages, whether as a result of a breach of express or implied warranties or otherwise. Some jurisdictions do not allow limitations on how long implied warranties will last and some jurisdictions do not allow the exclusion or limitation of consequential or incidental damages, so those provisions may not apply to you. While this warranty gives you specific legal rights, you may also have other rights which vary from jurisdiction to jurisdiction.

The Quality Management System of ROHO, Inc. is certified to ISO 9001:2008 and ISO 13485:2003.

© 2013, 2016 ROHO, Inc.

ROHO® is a registered trademark of ROHO, Inc.

Item # T20196

Revision: 08/02/2016

Print Date: _____



ROHO, Inc.
100 North Florida Avenue
Belleville, Illinois 62221-5429

Return Policy:

Product must be new and unused, and prior authorization is required; contact ROHO, Inc. May be subject to a restocking charge.

Contact Information:

In the U.S.A.: ROHO Warranty Service and Customer Care

Phone: 800-851-3449

Fax: 888-551-3449

Warranty Service: warranty@roho.com

Customer Care: cc@roho.com

Note: If directed to return any items, please send to:
ROHO, Inc., 1501 South 74th Street, Belleville, IL 62223

Outside the U.S.A.: ROHO International

Phone: 618-277-9150

Fax: 618-277-6518

intl@roho.com

Or visit ROHO.com for a list of ROHO International distributors.

Limited Warranty:

What is covered? Defects in materials or workmanship of the product.

For how long? 6 months from the date the product was originally purchased.

What is not covered? A product that has been misused, damaged by an accident, or damaged from “an act of Nature”, e.g., flood, tornado, earthquake, fire. Any substitutions of supplied product accessories or modification to the product will void the warranty.

What the customer must do: Contact the ROHO, Inc. Items sent without prior authorization will not be returned to the customer.

Disclaimer and Limitation of Warranties: Any implied warranties, including the MERCHANTABILITY AND FITNESS FOR A PARTICULAR PURPOSE, are limited to the time period defined in the instructions provided with the product, and any action for a breach of such warranties or any express warranties herein must be commenced within that time. ROHO, Inc. shall not be responsible for any incidental or consequential damages, whether as a result of a breach of express or implied warranties or otherwise. Some jurisdictions do not allow limitations on how long implied warranties will last and some jurisdictions do not allow the exclusion or limitation of consequential or incidental damages, so those provisions may not apply to you. While this warranty gives you specific legal rights, you may also have other rights which vary from jurisdiction to jurisdiction.

The Quality Management System of ROHO, Inc. is certified to ISO 9001:2008 and ISO 13485:2003.

© 2013, 2016 ROHO, Inc.

ROHO® is a registered trademark of ROHO, Inc.

Item # T20196

Revision: 08/02/2016

Print Date: _____



ROHO, Inc.
100 North Florida Avenue
Belleville, Illinois 62221-5429