

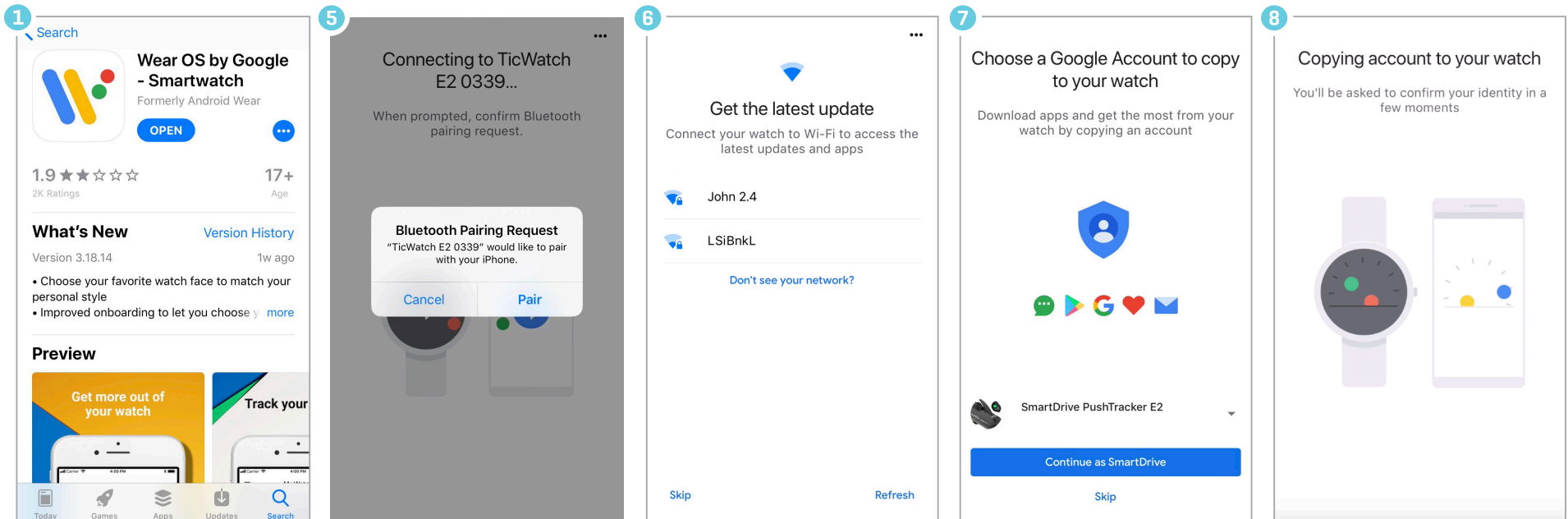


PushTracker E2 - Initial Setup

NOTE: Wifi is required for set-up

1 PushTracker E2 & Wear OS

1. Download *Wear OS* on your Android or Apple phone
 -  
2. Read/accept Google terms of service & enable Bluetooth® sharing
3. Turn on watch, select language
4. Read/accept Mobvoi policy
5. Pair/connect PushTracker E2 to phone
6. Connect your watch to WiFi
7. Choose/sign in/create Google account
8. Initialization
9. Wear OS tutorial

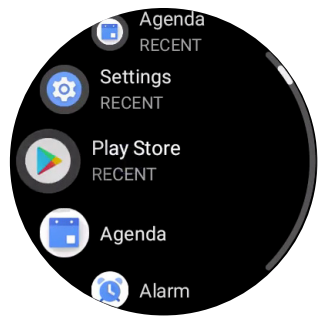


NOTE: For demos or anyone ordering a PushTracker E2 to retrofit onto their existing SmartDrive, the firmware needs to be updated to achieve full functionality. Follow the steps above, then use your PushTracker E2 to update your SmartDrive unit.

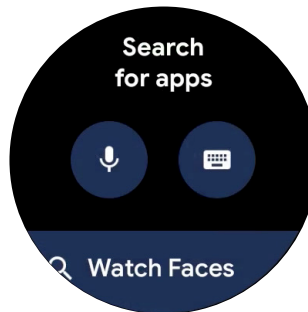
PushTracker E2 - Initial Setup

NOTE: Wifi is required for set-up

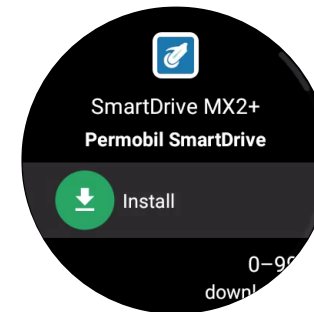
2 Download SmartDrive MX2+ app



1 Go to Google Play Store on PushTracker E2

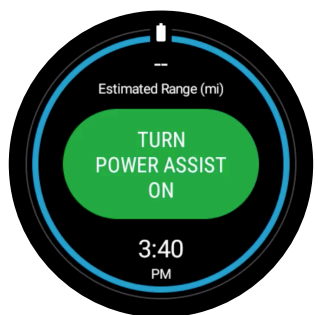


2 Search "SmartDrive"

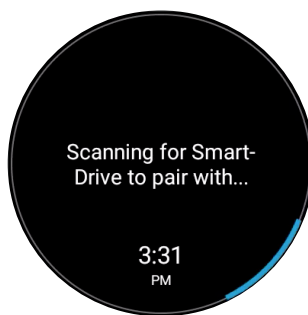


3 Install & launch SmartDrive MX2+ app

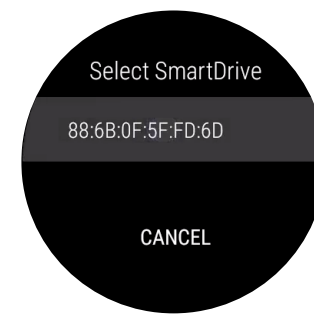
3 Pair & go



1 With your SmartDrive unit turned on, launch the SmartDrive MX2+ app and Tap "TURN POWER ASSIST ON"



2 Pair with SmartDrive by tapping the number listed on the screen. You can only pair when one SmartDrive is present



3 You are now paired & connected!

NOTE: You can also pair to your SmartDrive through the settings menu within the app

For more instructions check out the PushTracker E2 how to videos at [URL](#)